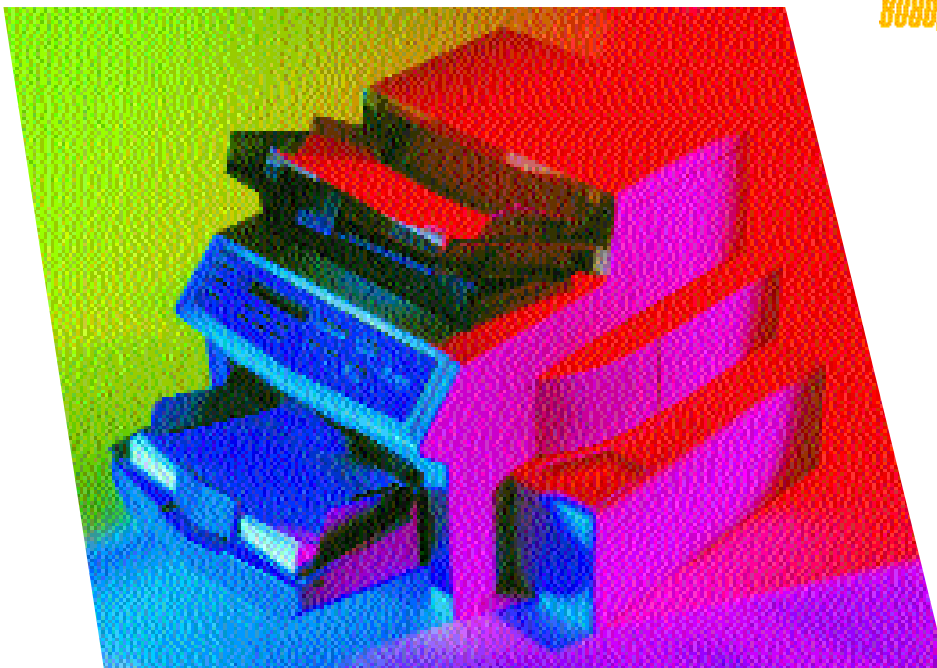


COPISCAN

8080, 8100, 8125 SCANNERS



8000 Series Scanners: Unsurpassed productivity through intelligent design.

Maximum throughput. Minimal downtime.

Bell & Howell understands every aspect of imaging and document management. This insight has enabled us to create powerful knowledge management solutions that not only make document imaging faster and more efficient, but are also a joy to use. The benchmark Copiscan 8000 Series perfectly reflects our commitment to seamlessly blend form and function.

Dependable throughput begins with our durable clamshell design which allows easy access to the paper path and facilitates maintenance. It features self-calibrating camera electronics that both minimize operator adjustments and ensure consistent quality from scan to scan. Bell & Howell's 8125, 8100 and 8080 scanners are all quiet yet powerful performers. Our 8000 Series is reliable and durable enough to handle the heaviest workloads, day in and day out.

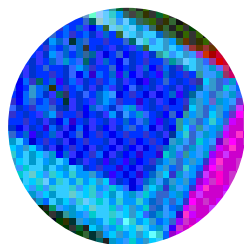
You need to know that every document is feeding – one at a time. Decades of scanner expertise has led to the next generation in document feeders. Our 8000 Series scanners incorporate Ultrasonic Multiple Feed Detection, which automatically alerts the operator if more than one document is being fed. This ensures the efficient scanning of every document when you feed standard or even mixed batches.

Image is Everything.

A number of cutting-edge image enhancement technologies work in conjunction to achieve unprecedented clarity and greater productivity. At the heart of the system is our Adaptive Contrast Enhancement (ACE) system. Simply put, ACE improves what you want to see, and suppresses what you don't. The result is images better than the original. What's more, the multiple color dropout feature allows processing of different colored forms with a single scanner, resulting in improved hit rates and smaller file sizes for all your forms.

Rely on the Number 1 Company in Support.

We're there when you need us most. Bell & Howell is so confident in its scanners, we back them with a comprehensive warranty that includes on-site technical support within 72 hours.* And the industry's first 2-year parts warranty. Going the extra mile has earned Bell & Howell a number 1 rating in reliability, ease of operation, paper handling, service and technical support. To find out how our innovative knowledge management solutions can boost your company's productivity, call us today at 1-800-SCAN-494 or visit our Web site: www.bhscanners.com.



*Continental U.S. only. For locations outside the continental U.S., check with your reseller.

BELL + HOWELL
SCANNER DIVISION
World's Most Documented Solutions.

COPISCAN

8080, 8100, 8125 SCANNERS

Specifications

Throughput Rate (at 200 dpi)

		<i>Landscape</i>	<i>Portrait</i>
8080	Simplex	80 ppm	60 ppm
	Duplex	160 ipm	120 ipm
8100	Simplex	100 ppm	75 ppm
	Duplex	200 ipm	150 ipm
8125	Simplex	125 ppm	95 ppm
	Duplex	250 ipm	190 ipm

Resolution

200-400 dpi scaleable

Autofeeder Capacity

500 sheets

Document Sizes

2.6" x 2.6" to 11.7" x 17" +

Image Enhancement

ACE 3.0 Standard

Host Interface

Bell & Howell Video Interface
Image Composition: 8 bit grayscale + 1 bit binary
4 bit grayscale
2 bit Recognition
Enhancement Technology
1 bit binary

SCSI - 50 pin SCSI II
Image Composition: 1 bit binary
Compression: None, CCITT Gr3, Gr4, JBIG
Image Processing: Bar/Patch code detection,
90 degree rotation,
small angle deskew

Electrical Requirements

115-230 VAC
50-60 Hz

Size

Height: 18"
Width: 22.75"
Depth: 27.5" with feeder

Weight

103 lbs.

Daily Duty Cycle

Unlimited

User Control Panel

Menu-driven scanner control, 2 x 24 display
3 programmable "smart keys"

Agency Recognition

CE Mark
UL1950
CUL/CSA 22.2 No. 950-95
TUV EN 60950
GS Mark
FCC Class A
EN50081-1/CISPR22 Class B
EN50082-2/IEC801, -2, -3, -4
VCCI Class 2

Options

Color Dropout – Single option-user selectable red,
green and blue

Front page pre-scan imprinter

Back page post-scan imprinter

(Only one imprinter can be used at once)

Specifications subject to change without notice.

Call us today at 1-800-SCAN-494
or visit our Web site: www.bhscanners.com.

BELL + HOWELL
SCANNER DIVISION
World's Most Documented Solutions.

3000 Malmo Drive
Arlington Heights, IL 60005

Bell & Howell, BELL + HOWELL and Copiscan are trademarks of Bell & Howell Company.
© 1999 Bell & Howell Scanner Division. All rights reserved. Bell1762/0199